

Committed To Building A World-class  
Intelligent Electromechanical Brand



## Poultry Farm Equipment Gearmotor

W  
A  
N  
S  
H  
S  
I  
N  
®

### WANSHSIN SEIKOU (HUNAN) CO., LTD

Website : [www.wanshsindrive.com](http://www.wanshsindrive.com)  
Add. : WANSHSIN Industrial Park, Ningxiang Hi-tech Zone,  
Changsha City, Hunan Province, China 410600  
Tel : +86-731-8422 1213  
Email : [sales@wanshsin.com](mailto:sales@wanshsin.com)  
WhatsApp : +86 189 3245 8072 (Ms. Angel)



Committed To Building A World-class Intelligent Electromechanical Brand

# CONTENTS

01-02	Company Profile
03-06	AC Gearmotor
07-08	WXR/XF/XK/XS
09-11	Poultry Farm Feeding Gearmotor
12-13	Worm Gear Reducer
14-15	Three Phase Asynchronous Motor
16-16	PMSM Exhaust Fan
17-20	DC Brushless Permanent Magnet Motor



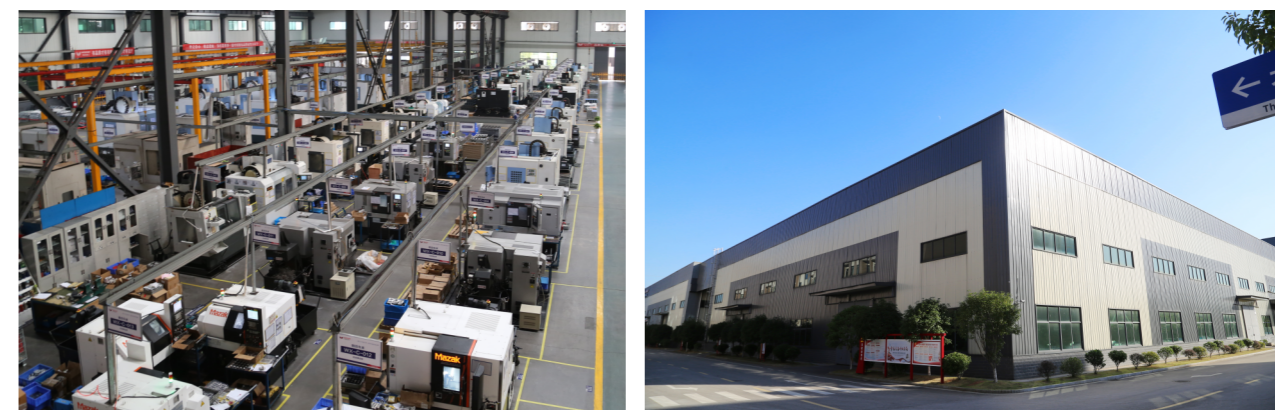
## WANSHSIN Seikou (Hunan) Co., Ltd.



WANSHSIN was founded in 2009 in Dongguan, Guangdong, and moved its headquarters to Changsha Hunan in 2014.

WANSHSIN is a leading professional gearbox and gearmotor manufacturer and intelligent automation complete solution provider, integrating R&D, production, sales and service, products include gear reducer, gear motor and controller (servo driver, inverter, etc), which are widely used in lithium battery industry, automated production lines, robots, automobile manufacturing, engineering machinery, warehousing and logistics, metallurgy chemicals, ceramics, animal husbandry and other industries. WANSHSIN has gradually become a reliable long-term partner of those leading enterprises of relevant industries.

## Core Competitiveness



### 1. Leading R&D Capability

Three major R&D centers have been established to lead the industry's high-quality development with innovation.

### 2. Excellent Quality

We are the pioneer in introducing and launching the advanced automotive industry quality control standards pre-planning of product quality and have equipped with a large number of imported international advanced inspection/testing equipment to ensure product quality.

### 3. Advanced Manufacturing

We have hundreds of domestic advanced processing equipment with a total value of more than 100 million yuan, and our capacity is in a leading position in China.

### 4. Fast Service

Self built warehouse system with sufficient inventory; Short delivery cycle, fast delivery of conventional and non-standard products; Configure with a number of domestic TOP-level logistics providers; Fast after-sales response.

# AC Gearmotor

## Parameters

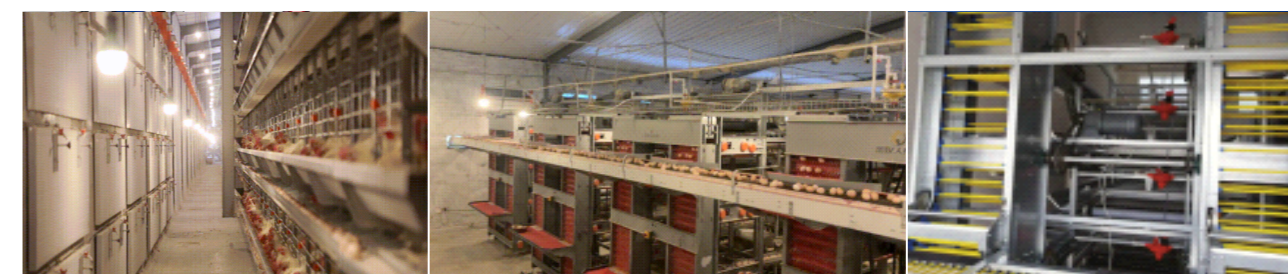
Output shaft size	18、22、28、32、40、45、50、60 (Size can be customized)
Power	100W-7500W
Ratio	3、5、10……1800
1-phase	110V,220V/50,60HZ-1PHASE
3-phase	220V,380V/50,60HZ-3PHASE
Brake available	Brake unit, with release brake unit,DC24V brake
Motor No-Load	No-load motor for 1h,temperature $\leq$ 55°C
Motor Load	load for 1h,temperature $\leq$ 68°C

## Product Advantages

- **High durability**  
The gear is made of high-strength alloy steel and the shell is made of high-strength die-cast aluminum alloy, which is light and durable.
- **High efficiency**  
Better efficient transmission than conventional bevel gears and worm gear reducers at the same speed ratio condition.
- **High output speed**  
Maximum output speed up to 10000rpm.
- **Low noise**  
Compact design, precision manufacturing, noise below 65dB(A).
- **Maintenance free**  
The whole machine is compact, the gear motor is lubricated with grease, and life-long maintenance free.

## Applications

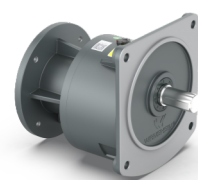
This product is widely used in automatic egg pickers, manure cleaning equipment, egg conveyors, feeding equipment etc.



GV vertical gear motor



GH horizontal gear motor

Vertical three-phase standard  
IEC aluminum gear motor

GVM vertical straight gear motor



GHM horizontal straight gear motor

GVD vertical dual  
axle gear motorGHD horizontal dual  
axle gear motor

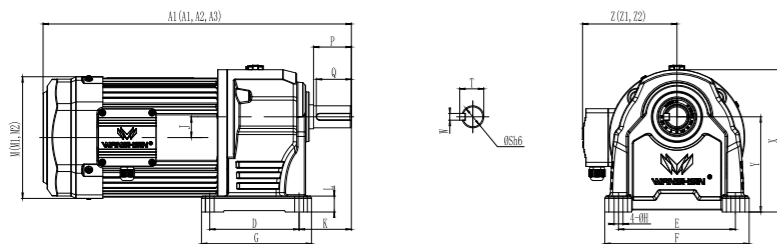
# 1 GH HORIZONTAL SINGLE-PHASE THREE-PHASE,ALUMINUM SHELL(BRAKE)GEAR MOTOR

HP-4P	RATIO CODE	SHAFT DIAMETER	A1	A2	A3	D	E	F	G	H	L	J	K	M1	M2	X	Y	Z1	Z2	KG	
100W 1/8HP	3-50	1#	18	253	273	257	40	110	135	65	9	10	16	45	128.8	128.8	132	88.5	116	116	5.3
	60-200	2#	22	287	307	291	65	130	163	90	11	15	18.2	56	128.8	128.8	152	97.5	116	116	6.9
200W 1/4HP	3-10	1#	18	273	293	277	40	110	135	65	9	10	16	45	128.8	128.8	132	88.5	116	116	6.7
	15-90	2#	22	307	327	311	65	130	163	90	11	15	18.2	56	128.8	128.8	152	97.5	116	116	8.6
	100-200	3#	28	333	353	337	90	140	180	122	11	15	20.8	65	128.8	128.8	180	116	116	116	11
400W 1/2HP	3-10	2#	22	327	346	331	65	130	163	90	11	15	18.2	56	128.8	155.4	152	97.5	116	133	11
	15-90	3#	28	353	372	357	90	140	180	122	11	15	20.8	65	128.8	155.4	180	116	116	133	14
	100-200	4#	32	388	407	392	130	170	215	160	13	25	30.2	76	128.8	155.4	210	138.5	116	133	19.6
750W 1HP	3-25	3#	28	382	415	382	90	140	180	122	11	15	20.8	65	155.4	179.2	180	116	133	145	15
	30-120	4#	32	417	449	417	130	170	215	160	13	25	30.2	76	155.4	179.2	210	138.5	133	145	21.6
	130-200	5#	40	444	476	444	150	210	260	185	15	25	42.2	80	155.4	179.2	248	160	133	145	42
1500W 2HP	4-25	4#	32	449		470	130	170	215	160	13	25	30.2	76	179.2		210	138.5	145		27.6
	30-120	5#	40	476		497	150	210	260	185	15	25	42.2	80	179.2		248	160	145		47
	130-200	6#	50	517		538	170	265	330	220	19	30	51.7	104	179.2		315	200	145		52
2200W 3HP	3-60	5#	40	482		508	150	210	260	185	15	25	42.2	80	203.6		248	160	153		48
	70-200	6#	50	523		549	170	265	330	220	19	30	51.7	104	203.6		315	200	153		55
3700W 5HP	3-10	5#	40	498		524	150	210	260	185	15	25	42.2	80	203.6		248	160	153		50
	15-180	6#	50	539		565	170	265	330	220	19	30	51.7	104	203.6		315	200	153		57
5500W 7.5HP	5-10	7#	45	545		585	200	250	310	235	15	30	42.2	93	250		265	175	178		78
	11-30	8#	50	579		619	170	265	330	220	19	30	51.7	104	250		315	200	178		88
	31-60	8#	50	579		619	170	265	330	220	19	30	51.7	104	250		315	200	178		90
	61-100	8#	60	589		629	170	265	330	220	19	30	51.7	115	250		315	200	178		93
7500W 10HP	5-10	8#	50	619		659	170	265	330	220	19	30	51.7	104	250		315	200	178		99
	11-30	8#	60	629		669	170	265	330	220	19	30	51.7	115	250		315	200	178		103
	31-60	8#	60	629		669	170	265	330	220	19	30	51.7	115	250		315	200	178		110

OUTPUT SHAFT SIZE	SHAFT		KEYWAY			KEY
	Sh6	P	W	T	Q	SPEC
Φ18	30	5	20	25	5×5×25	
Φ22	40	7	25	35	7×7×35	
Φ28	45	7	31	40	7×7×40	
Φ32	55	10	35.5	50	10×8×50	
Φ40	65	10	43.5	60	10×8×60	
Φ45	75	12	48.5	70	12×8×70	
Φ50	80	14	54	75	14×9×75	
Φ60	90	15	63.5	85	15×10×85	



- A1、M1、Z1 are the sizes of three-phase motors.
- A2、M2、Z2 are the sizes of single-phase motors.
- A3 is the size of three-phase motors with brakes.



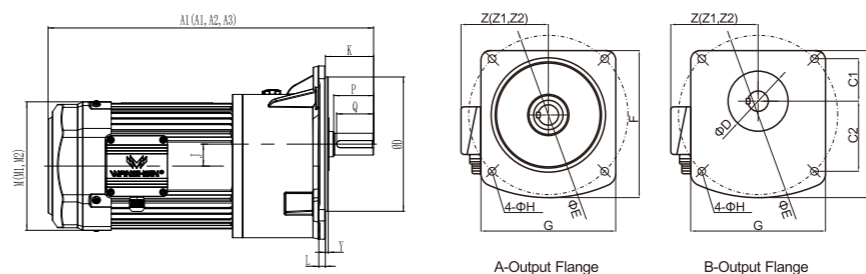
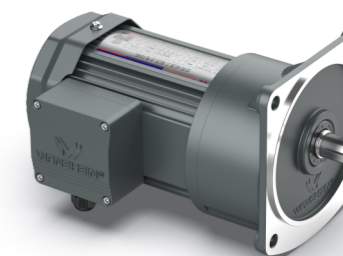
# 2 GV VERTICAL SINGLE-PHASE THREE-PHASE, ALUMINUM SHELL(BRAKE)GEAR MOTOR

HP-4P	RATIO CODE	SHAFT DIAMETER	A1	A2	A3	D	E	F	G	H	L	J	K	M1	M2	Y	Z1	Z2	KG	
100W 1/8HP	3-50	1#	*18	253	273	257	50	140	120	120	9	12	16	38	128.8	128.8	5	116	116	5.3
	60-200	2#	22	287	307	291	148	185	170	156	11	12	18.2	49	128.8	128.8	3.5	116	116	6.9
200W 1/4HP	3-10	1#	*18	273	293	277	50	140	120	120	9	12	16	38	128.8	128.8	5	116	116	6.9
	15-90	2#	22	307	327	311	148	185	170	156	11	12	18.2	49	128.8	128.8	3.5	116	116	8.6
400W 1/2HP	3-10	2#	22	327	346	331	55	170	146	146	11	12	18.2	49	128.8	128.8	3.5	116	116	8.6
	15-90	2#	*22	307	327	311	55	170	146	146	11	12	18.2	49	128.8	128.8	3.5	116	116	8.6
	100-200	3#	28	333	353	337	170	220	195	180	11	15	20.8	57	128.8	128.8	4	116	116	11
750W 1HP	3-10	2#	22	327	346	331	148	185	170	156	11	12	18.2	49	128.8	155.4	3.5	116	133	11
	3-10	2#	*22	327	346	331	55	170	146	146	11	12	18.2	49	128.8	128.8	3.5	116	133	11
	15-90	3#	28	353	372	357	170	220	195	180	11	15	20.8	57	128.8	155.4	4	116	133	14
	100-200	4#	32	388	407	392	185	255	237	215	13	17	30.2	67	128.8	155.4	4	116	133	19.4
1500W 2HP	3-25	3#	28	382	415	382	170	220	195	180	11	15	20.8	57	155.4	179.2	4	133	145	15
	30-120	4#	32	417	449	417	185	255	237	215	13	17	30.2	67	155.4	179.2	4	133	145	21.4
	130-200	5#	40	444	476	444	230	310	300	275	15	20	42.2	79	155.4	179.2	5	133	145	42
2200W 3HP	4-25	4#	32	449		470	185	255	237	215	13	17	30.2	67	179.2		4	145		27.4
	30-120	5#	40	476		497	230	310	300	275	15	20	42.2	79	179.2		5	145		47
	130-200	6#	50	517		538	280	390	360	330	19	20	51.7	90	179.2		5	145		52
3700W 5HP	3-10	5#	40	482		508	230	310	300	275	15	20	42.2	79	203.6		5	153		48
	70-200	6#	50	523		549	280	390	360	330	19	20	51.7	90	203.6		5	153		55
5500W 7.5HP	3-10	5#	40	498		524	230	310	300	275	15	20	42.2	79	203.6		5	153		50
	15-180	6#	50	539		565	280	390	360	330	19	20	51.7	90	203.6		5	153		57

## OUTPUT SHAFT SIZE

SHAFT	KEYWAY			KEY
	P	W	T	Q
Sh6				
Φ18	30	5	20	25
Φ22	40	7	25	35
Φ28	45	7	31	40
Φ32	55	10	35.5	50
Φ40	65	10	43.5	60
Φ45	75	12	48.8	70
Φ50	80	14	54	75

- A1、M1、Z1 are the sizes of three-phase motors.
- A2、M2、Z2 are the sizes of single-phase motors.
- A3 is the size of three-phase motors with brakes.
- \*Belong to B type output flange.



- NOTE :
- 1、GV18, C1 is 41.9 , C2 is 78.3
  - 2、GV22, C1 is 41.9 , C2 is 78.3

# WXR/XF/XK/XS Gear Motor

## Parameters

Product series	Power	Ratio	Frame size
WXR/XF/XK/XS	0.18kW-200kW	3.37-12912	37-187

## Product Advantage

### ■ High stability

The structure of the gear motor is designed with cylindrical gears and helical gears. It has a compact structure ,wide output torque coverage and long product life.

### ■ High bearing capacity

The shape and direction of the gear can be optimized to greatly reduce noise and improve load carrying capacity .The heavy-duty gear is also rounded to the root to further optimize the load-carrying capacity and mechanical properties.

### ■ Low temperature rising

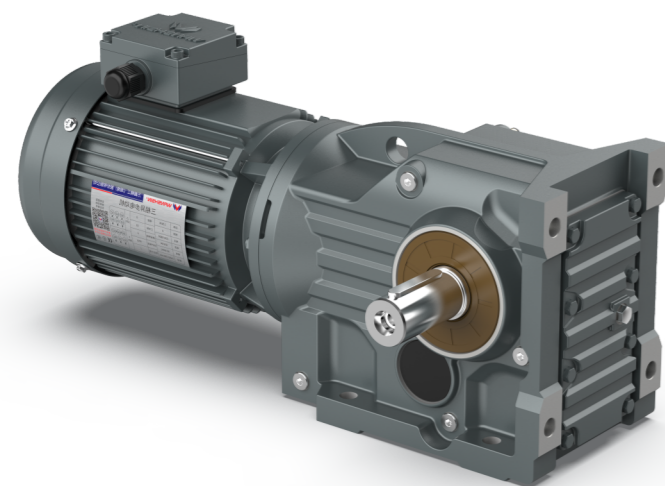
Streamlined design and internal noise reduction design for the shape of the cabinet for easy fan cooling.

### ■ Low noise

High modularity, smooth operation, low noise.

## Applications

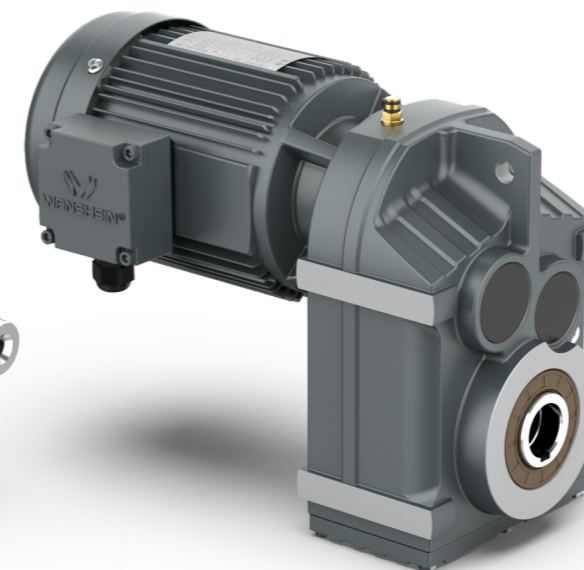
This product is widely used in electric power, coal, cement, metallurgy, port, environmental protection, chemical, light industry, plastics, petroleum, shipbuilding and other industries.



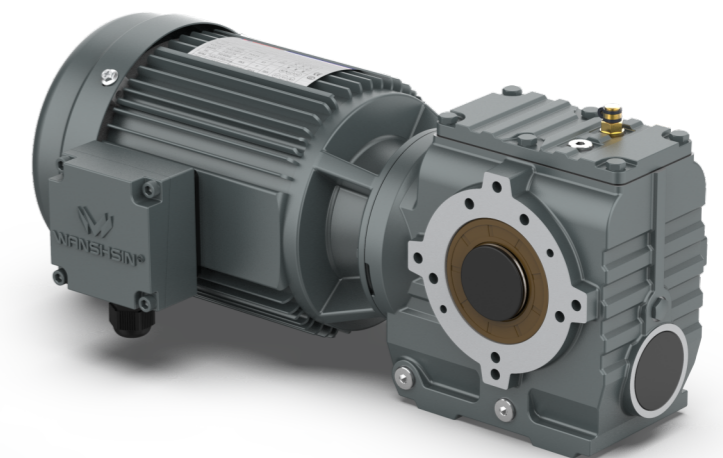
WXK Series-Bevel Gear Motor



WXR Series-Helical Gear Motor

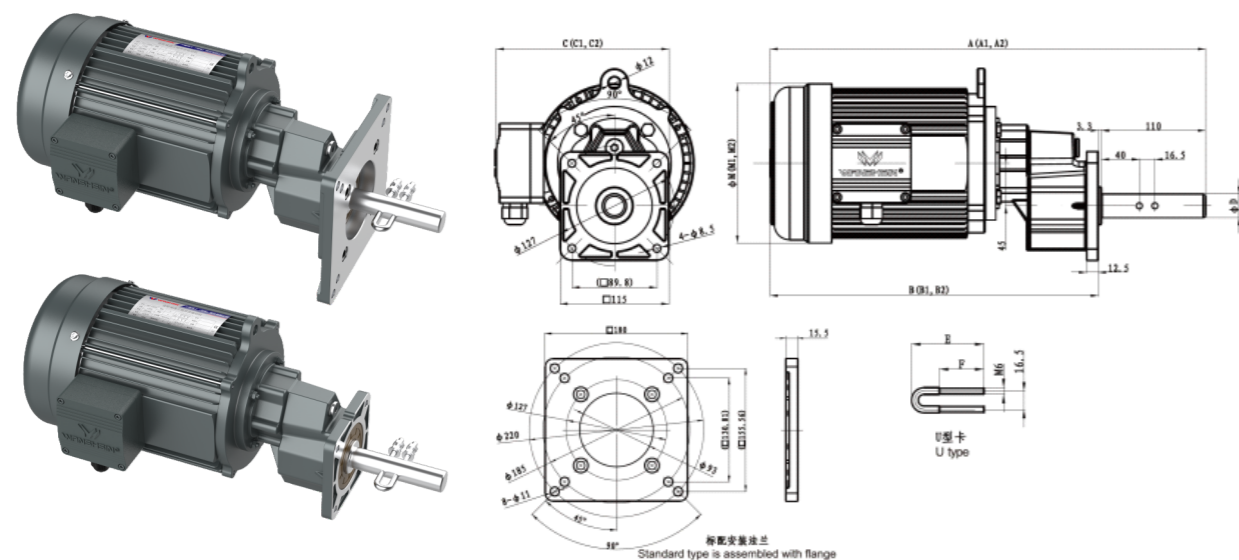


WXF Series-Helical Gear Motor



WXS Series-Worm Gear Motor

# Poultry Farm Feeding Gearmotor



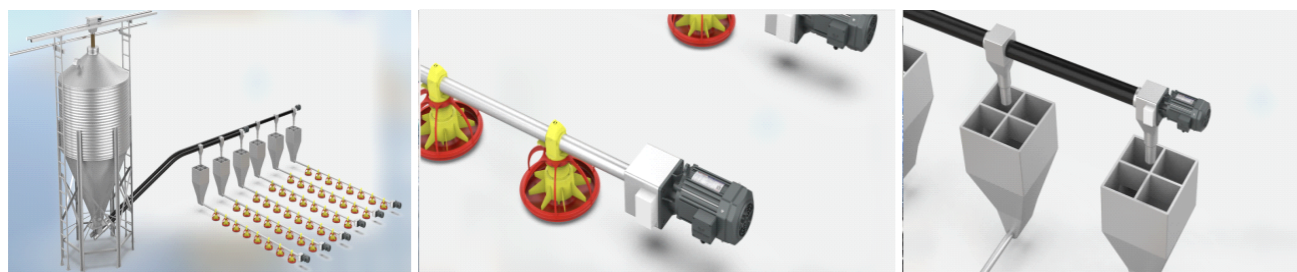
## Product Model

GV	19	750W	5	S
①	②	③	④	⑤

- ① Product model  
GV Vertical installation
- ② Size of output shaft  
19mm,20mm,25mm,28mm,32mm,35mm output shaft can be customized
- ③ Power of motor  
550W-1500W
- ④ Ratio: 3,4,5
- ⑤ Type of power  
S means three-phase  
A means single-phase

## Applications

This product is widely used in Automatic feeding system for poultry farm.



## Parameters of motor

POWER	POWER TYPE	CURRENT		STARTING CAPACITOR	RUNNING CAPACITOR
		220V	380V		
550W 3/4HP	Three-phase	2.6A	1.8A	300μF	30μF
	Single-phase	7.6A	3.8A		
750W 1HP	Three-phase	3.6A	2.1A	400μF	40μF
	Single-phase	9.0A	4.5A		
1100W 1.4HP	Three-phase	3.8A	2.2A	300μF	40μF
	Single-phase	11.0A	6.0A		
1500W 2HP	Three-phase	6.8A	4.0A	400μF	40μF
	Single-phase	20.0A	10.0A		

## Size form of separate motor and reducer for animal husbandry industry(mm)

### Separate motor and reducer for animal husbandry industry

POWER	RATIO	A1	B1	C1	M1	A2	B2	C2	M2	U TYPE SIZE		
										D	E	F
550W	3-5	414.7	301.4	182.3	150	414.7	301.4	208	150	19	55	30
										20		
750W	3-5	414.7	301.4	182.3	150	445.5	332.2	230	168	25	65	40
										28		
1100W	3-5	414.7	301.4	182.3	150	445.5	332.2	230	168	32	75	40
										35		

### Separate motor and reducer for animal husbandry industry (w/fan)

POWER	RATIO	A1	B1	C1	M1	A2	B2	C2	M2	U TYPE SIZE		
										D	E	F
550W	3-5	460	346.7	182.3	167	460	346.7	208	167	19	55	30
										20		
750W	3-5	460	346.7	182.3	167	500	386.7	230	192	25	65	40
										28		
1100W	3-5	460	346.7	182.3	167	500	386.7	230	192	32	75	40
										35		

- A1 , B1 , C1 , M1 is the size for 3phase gear motor.
- A2 , B2 , C2 , M2 is the size for 1phase gear motor.
- Standard type will be assembled with flange (please remark if no need).
- Can be customized with shaft size and power.

## Product Features

Compact Size

Light weight

Low Noise

Maintenance Free

### SPECIAL THREE-PHASE GEAR MOTOR

- Imported shaft, oil leak prevention and noiseless. Using the oil leak preventive shaft can ensure the lifelong free maintenance without oil leak.
- The paint receives powder anti-corrosive treatment.
- The overall motor adopts waterproof treatment with a protection level of Ip54.
- The gear uses a certain module, using a high precision gear-grinding machining to prolong its service life.
- All of the screws adopts stainless steel anti-rust treatment
- The surface of the output shaft receives electroplating treatment to prevent rust.
- The single-phase gear motor has electronic switch type and centrifugal switch type. The starting torque of the electronic switch type is 2 times larger than the traditional centrifugal switch type with the same stability as the three-phase motor. With a quick start, using the electronic switch to control is more secure and reliable.

### SPECIAL SINGLE-PHASE GEAR MOTOR

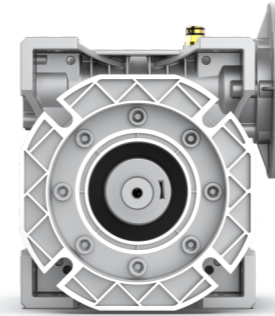
### SPECIAL INTEGRATED GEAR MOTOR

- Imported shaft, oil leak prevention and noiseless. Using the oil leak preventive shaft can ensure the lifelong free maintenance without oil leak.
- The newest Germans industrial appearance design. Optimized interior structure. The durability can be on a par with the Germans motor.
- The paint receives powder anti-corrosive treatment.
- The overall motor adopts waterproof treatment with a protection level of Ip54.
- The gear uses a certain module, using a high precision gear-grinding machining to prolong its service life.
- All of the screws adopts stainless steel anti-rust treatment
- The surface of the output shaft receives electroplating treatment to prevent rust.
- The single-phase gear motor has electronic switch type and centrifugal switch type. The starting torque of the electronic switch type is 2 times larger than the traditional centrifugal switch type with the same stability as the three-phase motor. With a quick start, using the electronic switch to control is more secure and reliable.

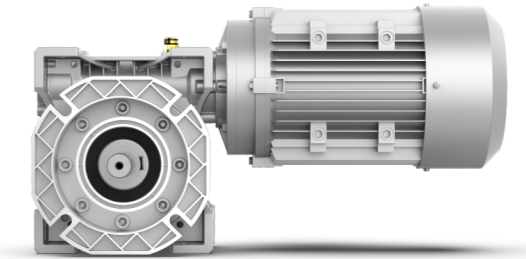
### SPECIAL SPLIT-TYPE GEAR MOTOR

- This motor and deceleration box for the removable type, convenient repair and replacement parts processing.

## Worm Gear Reducer



Worm Reducer



Worm Reducer+Three-phase Motor

## Model Description

Parameter				Input Output Structure						
Company Code	Model Code	Size	Ratio	Worm Output Shaft	Output Flange	Torque Arm	Worm Gear Output Shaft	Input Flange	Mounting Position	Terminal Box Position
W ①	NMRV ②	63 ③	40 ④	E ⑤	FA1 ⑥	A1 ⑦	SS1 ⑧	71 B5 ⑨	B3 ⑩	1 ⑪

① Brand  
W: Wanshsin

② Series Code  
NMRV - Input hole with input flange(Standard Configuration)  
NMRW - Input hole with input flange(High-end Configuration)  
NRV - Input axis without input flange(Standard Configuration)  
NRW - Input axis without input flange, worm gear material copper 12-1

③ Worm gear motor center distance corresponds to 9 types of gearboxes  
025, 030, 040, 050, 063, 075, 090, 110, 130...

④ Ratio  
7.5, 10, 15, 20, 25, 30, 40, 50, 60, 80, 100...

⑤ Worm Output Shaft  
No code indicates without same direction tail shaft;  
E - With same direction tail shaft

⑥ Output Flange  
No code indicates without output flange;  
F(A),FB,FC(1/2)-Output flange code and position

⑦ Torque Arm  
No code indicates without torque arm;  
A(1/2)-Torque arm and position

⑧ Worm Gear Output Shaft  
No code indicates hole output;  
SS(1/2)-(Single Shaft)Single Shaft and position  
DS:(Double Shaft) Dual shaft

⑨ Input Flange Size  
Selection with motor(Refer to the performance parameter selection table)

⑩ Mounting Position Code  
B3, B8, B6, B7, V5, V6

⑪ Terminal Box Position  
1, 2, 3, 4  
Outlet Direction X, F

## Product Advantages

- **High efficiency**  
 The precision-grinding hard-tooth drive worm shaft, with high transmission efficiency, large output torque, and strong load-bearing capacity.
- **Large speed ratio range**  
 Each single frame has 11 reduction ratios from 7.5:1 to 100:1.
- **Good heat dissipation performance**  
 The high-quality aluminum alloy casting box has excellent thermal conductivity and it can maintain good operating performance in harsh working environments.
- **Nice interchangeability**  
 Comply with IEC size standard and IM international installation method, with excellent interchangeability.
- **Low noise**  
 The accurate dynamic balance correction and special low-noise bearings make the operation more stable and quiet.
- **Good sealing**  
 The housing body adopts a tight structure, and the sealing is more reliable and safe when the motor is connected with the reducer.
- **Flexible installation**  
 There is a full range of universal installation types.

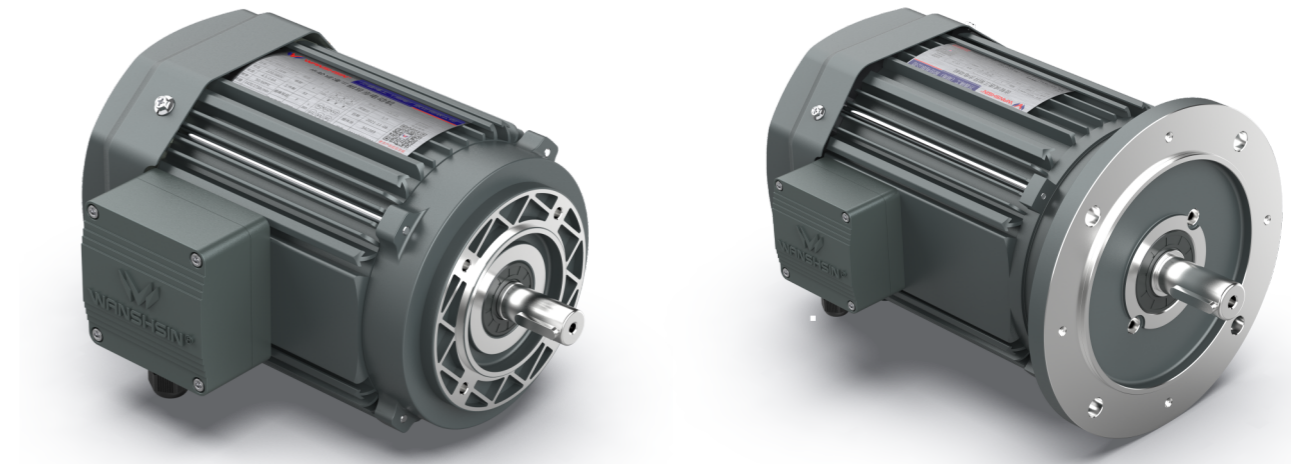
## Application

Metallurgy, mining, transportation, water conservancy, chemical industry, food, beverage, textile, tobacco, packaging, environmental protection and other industries.



## Three Phase Asynchronous Motor B14

## Three Phase Asynchronous Motor B5



## Product introduction

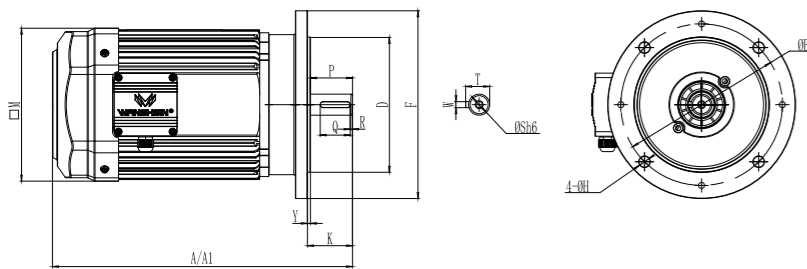
WS	S	B	0.12kW	4	B5
①	②	③	④	⑤	⑥

- ① Brand  
 WS-Wanshin Brand
- ② Motor  
 S-3- phase asynchronous motor
- ③ Brake  
 No Code-Without Brake  
 B-Power-off Brake  
 AB-Manual Release  
 (Automatic return to braking position)
- ④ Rated output power of motor  
 0.12kW-Motor rated power is 0.12kW
- ⑤ Number of motor poles  
 2Poles 6Poles  
 4Poles 8Poles
- ⑥ Motor flange  
 B5-Flange size same with national standard B5  
 B14-Flange size same with national standard B14

# DIMENSIONS(MM)

## 1 VERTICAL THREE-PHASE STANDARD IEC ALUMINUM (BRAKE) MOTOR (B5)

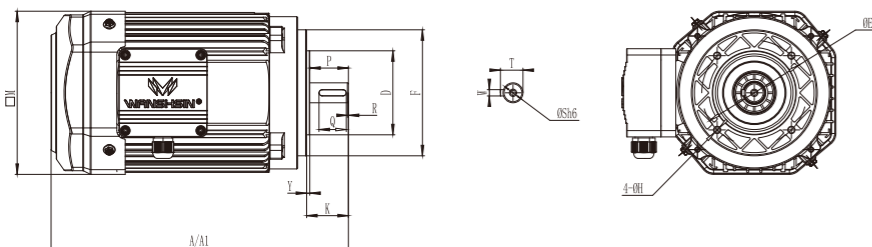
OUTPUT POWER	A	A1	D	E	F	H	K	M	P	Q	R	S	T	W	Y	KG
200W 1/4HP	232	236	95	115	140	10	23	128.8	20	10	2	11	12.5	4	3	5.5
400W 1/2HP	250	254	110	130	160	10	30	128.8	27	14	2	14	16	5	3	6.9
750W 1HP	297	297	130	165	200	12	40	155.4	39	25	2	19	21.5	6	3	10.6
1500W 2HP	350	370	130	165	200	12	50	179.2	50	32	3	24	27	8	3.5	16.5
2200W 3HP	384	410	180	215	250	14.5	60	203.6	60	40	3	28	31	8	4	28
3700W 5HP	400	426	180	215	250	14.5	60	203.6	60	40	3	28	31	8	4	34.5
5500W 7.5HP	471	471	230	265	300	15	80	250	80	60	4	38	41.5	10	4	45
7500W 10HP	511	511	230	265	300	15	80	250	80	60	4	38	41.5	10	4	55



- A1 is the size of the three-phase motor .
- A1 is the size of the three-phase motor with brake.

## 2 VERTICAL THREE-PHASE STANDARD IEC ALUMINUM (BRAKE) MOTOR (B14)

OUTPUT POWER	A	A1	D	E	F	H	K	M	P	Q	R	S	T	W	Y	KG
200W 1/4HP	230	233	60	75	90	M5	23	128.8	20	10	2	11	12.5	4	3	5.5
400W 1/2HP	250	254	70	85	105	M6	30	128.8	27	14	2	14	16	5	3	6.9
750W 1HP	287	299	80	100	120	M6	40	155.4	39	25	2	19	21.5	6	3	10.6
1500W 2HP	348	369	95	115	140	M8	50	179.2	50	32	3	24	27	8	3.5	16.5
2200W 3HP	383	409	110	130	160	M8	60	203.6	60	40	3	28	31	8	4	28
3700W 5HP	398.5	424.5	110	130	160	M8	60	203.6	60	40	3	28	31	8	4	34.5



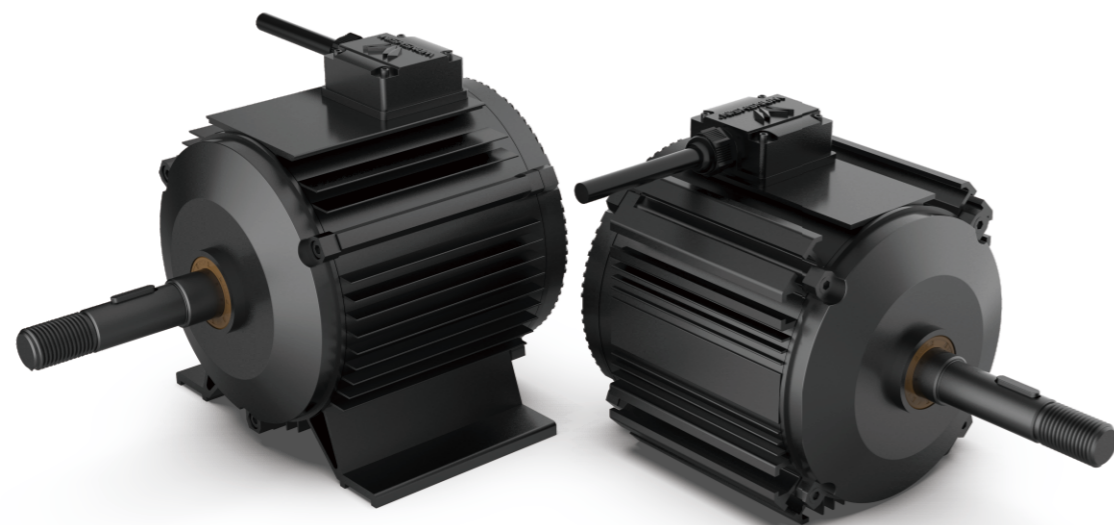
- A1 is the size of the three-phase motor .
- A1 is the size of the three-phase motor with brake.

# PMSM Exhaust Fan



Product Parameters				
Model No.	WX-PMSM-1-037	WX-PMSM-1-055	WX-PMSM-1-075	WX-PMSM-1-110
Bladediameter(mm)	860mm	1060mm	1260mm	1420mm
Airvolumn(m <sup>3</sup> /H)	22000(m <sup>3</sup> /H)	32000(m <sup>3</sup> /H)	40000(m <sup>3</sup> /H)	50000(m <sup>3</sup> /H)
Ratedpower(W)	375W	550W	750W	1.1kw
Ratedvoltage(V)	220/380V	220/380V	220/380V	220/380V
Height(mm)	860mm	1060mm	1260mm	1460mm
Width(mm)	860mm	1060mm	1260mm	1460mm
Thickness(mm)	560mm	560mm	560mm	580mm

# DC Brushless Permanent Magnet Motor



## Motor Characteristics

- Waterproof, sealed, household appearance design, high protection level;
- High efficiency, ultra-low energy consumption design, 30 to 50% energy saving than Asynchronous motor ;
- Long life, low noise, maintenance-free, high reliability design;
- Low speed, high torque, no blind point quick start, stable load operation;
- variety of operating modes, large speed range, remote speed control;
- Motor and driver integration design, function, speed regulation, operation and installation is simple.

ModelNo.	Rated.Voltage (V)	Ratedpower (KW)	Ratedtorque (N.M)	Ratedspeed (RPM)	Speedrange (RPM)	Working duty	Insulation grade	Protection grade (IP)
WX-PMSM-1-037	220/380V	375	3.7	960	/	S1	F	65
WX-PMSM-1-055	220/380V	550	7.5	700	/	S1	F	65
WX-PMSM-1-075	220/380V	750	12	600	/	S1	F	65
WX-PMSM-1-110	220/380V	1100	23	450	/	S1	F	65
WX-PMSM-1-037-T	220/380V	375	3.7	960	200-960	S1	F	65
WX-PMSM-1-055-T	220/380V	550	7.5	700	200-700	S1	F	65
WX-PMSM-1-075-T	220/380V	750	12	600	200-600	S1	F	65
WX-PMSM-1-110-T	220/380V	1100	23	450	200-450	S1	F	65

- W/T:adjustable speed W/OT:fixed speed

## Exhaust Fan Characteristics

- Bell mouth design is characterized by low noise, large air volume, strong wind pumping, high efficiency and low cost.
- Imported bearing, high strength, low noise, durable
- PVC shutter or aluminum shutter SYNTHESIZED by the principle of air flow, anti-oxidation, light weight, no deformation, Hexible opening, Prevent air from Howing back.
- Direct drive motor shaft directly lock vane disc, high stability strength, good toughness, low failure rate
- Plastic steel blade, no deformation, no fracture, attractive and durable

## Product Advantages

- **Energy saving** : less power consumption, only about 10%-15% power of traditional air conditioners
- **Environmental protection** : Freon-free (CFC)
- **Fast cooling effect** : after the outside air enters the room through the cooling water, the indoor temperature on the cooling water curtain side can reduce 5-10 degrees
- **Fast exhaust speed** : hot and odorous air is replaced and exhausted outdoors
- **Effective control of environment** : different wind speeds result in a cool wind effect, making people feel unusually comfortable and refreshing
- **Effectively prevent the spread of sudden influenza disease** : birds, mosquitoes, flies are vectors of infectious diseases, since the water curtain ventilation system is sealed by negative pressure, it will reduce the probability of the spread of disease vectors, allowing the staff to work in a comfortable, safe and secure environment.
- **High efficiency and energy saving** : saving about 3000kWh electricity per fan per year

## Applications

It is suitable for workshops with high temperature or unpleasant odor, such as heat treatment plants, casting plants, aluminum factories, shoe factories, leather goods factories, electroplating factories, various chemical factories, etc.

In an independent space, such as a factory building or a pipeline, a negative-pressure air fan or other air extractor device is installed at one end of it to generate air flows in and out, which causes a negative pressure, the forward air supply is called positive pressure. Negative pressure can discharge the hot air, odor and dust out of the factory. To create air convection in independent spaces, the total volume, total area, wind speed per second and air changes per hour of the plant need to be accurately calculated except the exhaust equipment.



## Function

- Remove excess heat in the workshop timely
- Remove the exhaust gas and unpleasant odor in time
- Prevent the build-up of influenza virus efficiently
- Increase oxygen rate thus improve work efficiency and production capacity
- Remove excess moisture to reduce the erosion of equipment and the discomfort of personnel
- Remove the smoke and dust in the workshop in time

